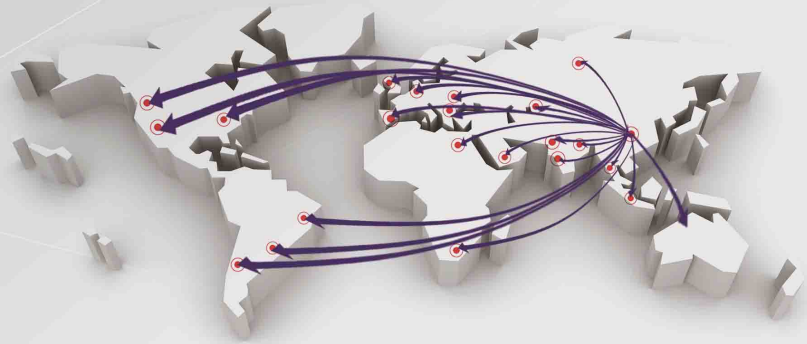




CQC-ISO9001 质量管理体系认证



# IPRETECH

## MACHINERY COMPANY LIMITED

### MachiMax

Ipretech Machinery Company Limited

Address: #339, jiangzhoulu, hailing district, taizhou, jiangsu, China. 225500

Tel:+86-0523-88685819 Fax: +86-0523-88682253

Mobile / WeChat/ WhatsApp: +86- 15850677727

Email: info@ipretech.com , ipretech@hotmail.com

Skype: gdsupplier

www.ipretech.com www.machimax.com



One-Stop station of your CNC EDM WireCut, Die Sinking, Superhole Drill manufacture factory





Ipretech machinery company limited is an integrated research & development, manufacturing, Exp & Imp as one of the professional CNC EDM manufacturer at jiangsu, China. All of machines are independent researched and developed, designed and manufactured by our advanced design idea & mindset.

Under the leadership of our boss Mr.JiaYi, we has gain two quality systems ---ISO9001 Certification and CE European Standard Certification, Also oversee contracts and keep promises certifications. Our exporting market have covered the United State America, Mexico, Brazil, Argentina, Chile, Indonesia, Malaysia, Vietnam, India, Pakistan, Russia, Turkey, Egypt, Italy, Poland, the Czech republic, Spain, Hungary and the United Kingdom etc. Ipretech machinery have grown up to be one of the well-known famous EDM manufacturer and Exporter from China.

Anyway, Ipretech Machinery will always keep our business philosophy "quality priority, R&D innovation, prompt shipment, dedicated after-sale Service and within 12 hrs response" all the Ipretech staff will be devoting themselves into working for you.

嘉逸

Main Spare Parts are all from world famous supplier:



### Enterprise Culture

- Reputation: the foundation of an enterprise
- Quality: the foundation of an enterprise servival
- Brand: the foundation of an enterprise growth
- Service: the foundation of an enterprise prosperity

Details determine success or failure, attitude determines everything.

### Processing facilities



## Precise Multi Cut/ Medium Speed IPM series (Servo / Step available)



1. IronCast bed HT250 with double heat treatment, High rigidity is maintained for 15-20 years .
2. Hiwin linear guide rail, NCM ball screw, origin made world famous brand to keep machine long term accuracy
3. Japan Panasonic AC servo driver&motor or stepper motor is optional
4. Delixi transducer, China famous brand specially for EDM wire cut
5. Dual direction automatic wire tension system, Automatic central lubrication system and Z axis up&down motor driver
6. Automatically intelligently generate all cutting parameters against different materials and thickness, Simple operate for any new users.



Material:	SKD-11
Thickness:	28mm
No.of Cut:	3 times
Accuracy:	0.005mm
Roughness:	Ra:0.9



Material:	SKD-11
Thickness:	10mm
No.of Cut:	3 times
Accuracy:	0.003mm
Roughness:	Ra:0.8

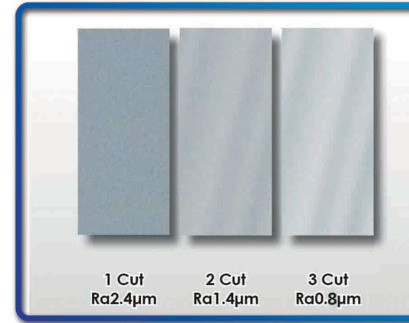


Material:	SKD-11
Thickness:	28mm
No.of Cut:	3 times
Accuracy:	0.005mm
Roughness:	Ra:0.8

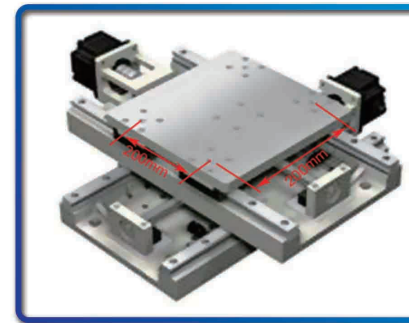


Material:	SKD-11
Thickness:	35mm
No.of Cut:	3 times
Accuracy:	0.005mm
Roughness:	Ra:1.0

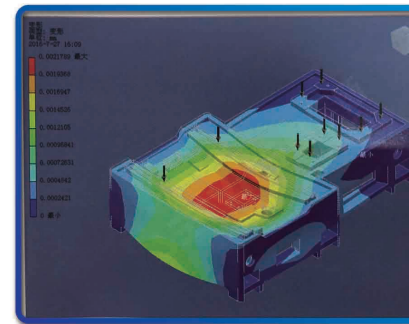
## Servo Model Quality Analysis :



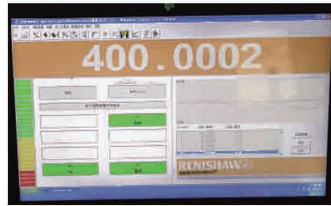
IPM320, IPM400, IPM500, IPM630, IPM800 use the multi cut model , it cuts once , and trim for 2nd, 3rd ...to achieve a better cutting accuracy and surface finishing roughness



Positioning accuracy  
Workpiece thickness: 10mm  
Materials: Cr12  
Positioning accuracy:0.005mm  
Re-positioning accuracy:0.002mm



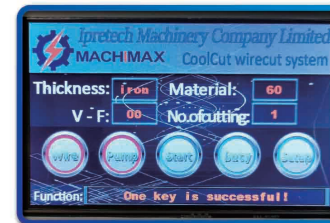
Max deformation is under the worktable, at the middle of LM guideway, max deformation is 0.002mm at 1000kgs



### Full Closed Loop controller :

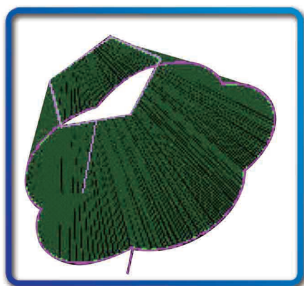


- Driver: Japan Panasonic AC servo motor & driver
- Rated power: 1.0KVA (controller only)
- Computer Protection level: IP54 by industrial computer
- Pulse power supply output voltage (V): DC60V
- Pulse width (Ton): 1us-255us
- Pulse interval (Toff): 2-25 Ton
- Processing current (A): 12A
- Group pulse: automatic
- Touch screen: 5 inch TFT touch screen
- Auto-center/edge finding: Yes
- Smart database: All the cutting parameters can be automatically generated as long as you choose the different material, thickness, No.of cut . It is very suitable for any different experienced workers.



Specification	Unit	IPM320/C	IPM400/C	IPM500	IPM630	IPM800
Worktable size	mm	460*740	540*840	640*1020	750*1180	1050*1420
X-Y Stroke	mm	320*400	400*500	500*630	630*800	800*1000
Taper angle	°	±6	±6	±6	±6	±6
Cutting thickness	mm	280	280	350	350	350
Best roughness	um	1.0	1.0	1.0	1.0	1.0
Cutting Speed	mm2/min	200	200	200	200	200
Driving motor		Stepper motor	Stepper motor	Stepper motor	Stepper motor	Stepper motor
Machine weight	KG	1650	2000	2500	3200	5500
Overall size	mm	1700*1250*2150	1960*1620*2160	2120*1760*2320	2430*2060*2350	2650*2250*2530
Wire diameter	mm	0.12-0.20	0.12-0.20	0.12-0.20	0.12-0.20	0.12-0.20
Wire running speed	m/s	11.5H(adjustable)	11.5H(adjustable)	11.5H(adjustable)	11.5H(adjustable)	11.5H(adjustable)
Cutting accuracy	mm	0.008	0.008	0.008	0.008	0.008
Maximum current	A	12	12	12	12	12
Power supply		3 Phase 380V	3 Phase 380V	3 Phase 380V	3 Phase 380V	3 Phase 380V
Worktable moving pulse equivalent		0.001	0.001	0.001	0.001	0.001
Worktable guide rail		Taiwan Hiwin Origin	Taiwan Hiwin Origin	Taiwan Hiwin Origin	Taiwan Hiwin Origin	Taiwan Hiwin Origin
Worktable screw		NMC Ball screw	NMC Ball screw	NMC Ball screw	NMC Ball screw	NMC Ball screw
Worktable Bearing		NSK/NTN	NSK/NTN	NSK/NTN	NSK/NTN	NSK/NTN
Worktable motor(option)		Changzhou BM	Changzhou BM	Changzhou BM	Changzhou BM	Changzhou BM
Wire feed screw		NMC	NMC	NMC	NMC	NMC
Wire feed bearing		NTN	NTN	NTN	NTN	NTN
Wire feed motor		Shanghai GW	Shanghai GW	Shanghai GW	Shanghai GW	Shanghai GW
Pulley		Black Diamond	Black Diamond	Black Diamond	Black Diamond	Black Diamond
Pulley bearing		NSK	NSK	NSK	NSK	NSK
Water nozzle		Rubine Diamond	Rubine Diamond	Rubine Diamond	Rubine Diamond	Rubine Diamond
Oil pump		Automatic oiling	Automatic oiling	Automatic oiling	Automatic oiling	Automatic oiling

Specification	Unit	IPM320-S	IPM400-S	IPM500-S	IPM630-S	IPM800-S
Worktable size	mm	460*740	540*840	640*1020	750*1180	1050*1420
X-Y Stroke	mm	320*400	400*500	500*630	630*800	800*1000
Taper angle	°	±6	±6	±6	±6	±6
Cutting thickness	mm	280	280	350	350	350
Best roughness	um	0.8	0.8	0.8	0.8	0.8
Cutting Speed	mm2/min	220	220	220	220	220
Driving motor		Japan Panasonic	Japan Panasonic	Japan Panasonic	Japan Panasonic	Japan Panasonic
Machine weight	KG	1650	2000	2500	3200	5500
Overall size	mm	1700*1250*2150	1960*1620*2160	2120*1760*2320	2430*2060*2350	2650*2250*2530
Wire diameter	mm	0.12-0.20	0.12-0.20	0.12-0.20	0.12-0.20	0.12-0.20
Wire running speed	m/s	11.5H(adjustable)	11.5H(adjustable)	11.5H(adjustable)	11.5H(adjustable)	11.5H(adjustable)
Cutting accuracy	mm	0.005	0.005	0.005	0.005	0.005
Maximum current	A	12	12	12	12	12
Power supply		3 Phase 380V	3 Phase 380V	3 Phase 380V	3 Phase 380V	3 Phase 380V
Worktable moving pulse equivalent		0.001	0.001	0.001	0.001	0.001
Worktable guide rail		Taiwan Hiwin Origin	Taiwan Hiwin Origin	Taiwan Hiwin Origin	Taiwan Hiwin Origin	Taiwan Hiwin Origin
Worktable screw		NMC Ball screw	NMC Ball screw	NMC Ball screw	NMC Ball screw	NMC Ball screw
Worktable Bearing		NSK/NTN	NSK/NTN	NSK/NTN	NSK/NTN	NSK/NTN
Worktable motor(option)		Changzhou BM	Changzhou BM	Changzhou BM	Changzhou BM	Changzhou BM
Wire feed screw		NMC	NMC	NMC	NMC	NMC
Wire feed bearing		NTN	NTN	NTN	NTN	NTN
Wire feed motor		Shanghai GW	Shanghai GW	Shanghai GW	Shanghai GW	Shanghai GW
Pully		Black Diamond	Black Diamond	Black Diamond	Black Diamond	Black Diamond
Pully bearing		NSK	NSK	NSK	NSK	NSK
Water nozzle		Rubine Diamond	Rubine Diamond	Rubine Diamond	Rubine Diamond	Rubine Diamond
Oil pump		Automatic oiling	Automatic oiling	Automatic oiling	Automatic oiling	Automatic oiling



options:  
±15, ±30, ±45, ±60



options:  
Taiwan Origin  
HiWin Linear Guide Railway



options:  
full cover, eco & user  
friendly

Specifications	Unit	DK7720	DK7725	DK7735	DK7745	DK7745F	DK7750	DK7750F	DK7763	DK7763F	DK7780	DK77100	DK77120
Worktable size	mm	280*430	340*520	470*720	580*820	580*930	660*1040	660*1140	750*1150	750*1360	1000*1370	1200*1720	1400*1950
X-Y Stroke	mm	200*250	250*320	350*450	450*550	450*630	500*630	500*800	630*800	630*1000	800*1000	1000*1200	1200*1600
Cutting thickness	Mm	300	400	500	500	500	600	600	700	700	800	1000	1000
Taper Angle	D/mm	0	±3	±3	±3	±3	±3	±3	±3	±3	±3	±3	±3
Max. Taper Angle	D/mm	0	±6	±15	±30	±30	±45	±45	±45	±45	±45	±45	±45
Wire Running Speed	m/s	11.5	11.5	11.5	11.5	11.5	11.5	11.5	11.5	11.5	11.5	11.5	11.5
Table Loading	kgs	100	300	400	500	500	800	800	1200	1200	2000	2600	2600
Wire diameter	mm	0.1-0.2	0.1-0.2	0.1-0.2	0.1-0.2	0.1-0.2	0.1-0.2	0.1-0.2	0.1-0.2	0.1-0.2	0.1-0.2	0.1-0.2	0.1-0.2
Worktable moving pulse	mm	0.001	0.001	0.001	0.001	0.001	0.001	0.001	0.001	0.001	0.001	0.001	0.001
Machine weight	Kgs	800	1260	1320	1650	1760	2420	2650	3200	3500	4000	5600	6500
Overall size	Mm	1100 *920 *1350	1460 *1150 *1550	1550 *1150 *1750	1700 *1250 *1850	1700 *1350 *1850	1750 *1420 *2150	1850 *1620 *2150	2160 *1950 *2250	2160 *2120 *2360	2450 *2250 *2450	2820 *2450 *2660	3250 *2450 *2660
Wire Transport Moto	Heterophase Motor												
Working accuracy	According to GB7926-2005												
Power Supply	3 Phase 380V												
Working fluid	Emulsify Soap/ Emulsify Ointment/ Emulsify Oil + Purified Water												
Machining Aver. Current	A	8	8	8	8	8	8	8	8	8	8	8	8
Max.Cutting Speed	Mm/min	180	180	180	180	180	180	180	180	180	180	180	180
Cutting Accuracy	mm	0.015	0.015	0.015	0.015	0.015	0.015	0.015	0.015	0.015	0.015	0.015	0.015
Cutting Roughness	Ra	<2.0	<2.0	<2.0	<2.0	<2.0	<2.0	<2.0	<2.0	<2.0	<2.0	<2.0	<2.0
Power Consumption	KW	0.8	1.8	1.8	2.2	2.2	2.8	2.8	3.2	3.2	3.8	4.2	4.5



ZNC system only Taiwan CTek Origin, High efficient and Durability. Provide DC / AC motor options.

Specification	Unit	D7135	D7145	D7150	D7165	D7175
Worktable size	mm	620*350	700*410	830*450	1000*550	1120*550
X-Y Stroke	mm	350*250	450*350	500*400	600*500	700*500
Z axis stroke	mm	180	200	250	250	250
Spindle head axis	mm	200	200	300	300	300
distance from electrode head to worktable	mm	200-560	260-660	290-800	320-950	320-970
working tank inner size	mm	880 x 560 x 350	1150*710*450	1280*730*450	1600*920*550	1750*950*550
Max. Electrode weight	kgs	50	70	150	250	250
workable loading	kgs	350	800	1500	2500	2800
Machine Overall size	mm	1350*1150*2100	1470*1250*2050	1800*1370*2400	2050*1850*2450	2150*1850*2450
Machine Weight	kgs	1450	2000	2500	3500	4000
Processing current	A	30/50	30/50/75	30/50/75/100	30/50/75/100	30/50/75/100
Positioning accuracy	mm	0.005	0.005	0.005	0.005	0.005
Repositioning accuracy	mm	0.003	0.003	0.003	0.003	0.003
Max.working speed	mm3/min	360/550	360/550	550/750/1050	550/750/1050	550/750/1050
Max. Roughness	um	Ra:0.2	Ra:0.2	Ra:0.2	Ra:0.2	Ra:0.2
Max.electrode consumption		<0.2%	<0.2%	<0.2%	<0.2%	<0.2%
Controller Overall Size	mm	750*650*1750	750*650*1750	750*650*1750	750*650*1750	750*650*1750
Controller Weight	kgs	200	200	200	200	200



High rigidity: "cross" workbench structure, single column spindle is designed, Machine table is made of granite (00 class) material

High precision Japanese panasonic AC servo motor, HIWIN or PMI precise ballscrew, Japan THK guide

High quality: positioning accuracy 5 mm/any 100um and repeated positioning accuracy 2 um, adopt full Japan Makino CNC system .

Security measures: liquid level protection, liquid temperature protection, automatic fire extinguishing devices and Power failure return, contact perception, diagnosis and error message etc functions

Specification	Unit	D450(430)	D540	D645	D850	D1060	D1260
Worktable size	mm	700*400	850*450	900*650	1100*650	1250*800	1250*800
X-Y Stroke	mm	450*350 (400*300)	500*400	600*450	850*500	1000*600	1200*600
Z axis stroke	mm	300	300	350	400	500	500
distance from electrode head to worktable	mm	320-620	400-700	420-770	500-900	500-1000	500-1000
working tank inner size	mm	1080 x 700 x 450	1450*800*500	1620*1100*550	1800*1100*570	2100*1250*600	2100*1250*620
Max. Electrode weight	kgs	100	120	150	200	400	400
workable loading	kgs	1000	1800	2500	3000	3500	4500
Machine Weight	kgs	2500	3300	3500	4500	6500	6500
Processing current	A	30/50	30/50/75	30/50/75/100	30/50/75/100	30/50/75/100	30/50/75/100
Positioning accuracy	mm	0.005	0.005	0.005	0.005	0.005	0.005
Repositioning accuracy	mm	0.003	0.003	0.003	0.003	0.003	0.003
Max.working speed	mm3/min	360/550	360/550	550/750/1050	550/750/1050	550/750/1050	550/750/1050
Max. Roughness	um	Ra:0.15	Ra:0.15	Ra:0.15	Ra:0.15	Ra:0.15	Ra:0.15
Max.electrode consumption		<0.15%	<0.15%	<0.15%	<0.15%	<0.15%	<0.15%
Controller Overall Size	mm	750*650*1750	750*650*1750	750*650*1750	750*650*1750	750*650*1750	750*650*1750
Controller Weight	kgs	250	250	250	250	250	250



Manual Model , Available Taper drill  $\pm 45^\circ$

Portable EDM Superhole Drill

ZNC Model ,Auto-return to original position function after finish drilling

Specifications	Unit	XF300	XF400	XF500	XF630	XF800	Portable Drill XFP
Worktable size	mm	280*420	320*460	585*860	705*1020	780*1080	Portable
X-Y Stroke	mm	200*300	300*400	400*500	500*630	630*800	**
Control Type		Common/ZNC	Common/ZNC	Common/ZNC	Common/ZNC	Common/ZNC	**
Principal Axis Travel		300+360	300+360	300+360	300+360	300+360	320+300
Water Tank Capacity	L	25	25	25	25	25	30
Table Loading	kgs	200	250	400	800	1200	
Electrode Diameter	mm	0.2-3.0(300: 1) 0.3-5.0	0.2-3.0(300: 1) 0.3-5.0	0.2-3.0(300: 1) 0.3-5.0	0.2-3.0(300: 1) 0.3-5.0	0.2-3.0(300: 1) 0.3-5.0	0.2-3.0(300: 1) 0.3-5.0
Machine weight	Kgs	550	600	1320	1650	2450	
Overall size	Mm	1150*900*1750	1250*980*1750	1680*1250*1950	1850*1320*2050	2060*1550*2050	520*280*390
Working accuracy		According to GB7926-2005					
Power Supply		Single Phase 220V, 3 Phase 380V					
Working fluid		Clean Water + Purified Water					
Machining Aver. Current	A	30/50	30/50	30/50	30/50	30/50	30
Max.Cutting Speed	Mm/min	50-70	50-70	50-70	50-70	50-70	40-60
Max.Processing Power	W	3.3	3.3	3.6	3.8	4.2	1.3
Water Pump pressure	Mpa	8-10	8-10	8-10	8-10	8-10	8
Central lubrication		Yes	Yes	Yes	Yes	Yes	



CNC Model, Available 3, 4, 5, 6 Axes

Specifications	Unit	XF3020	XF3040	XF4050	XF5063	XF6380
Worktable size	mm	320*560	380*680	570*820	685*1020	750*1150
X-Y Stroke	mm	200*300	300*400	400*500	500*650	630*800
Control Type		CNC	CNC	CNC	CNC	CNC
Principal Axis Travel		300+360mm	300+360mm	300+360mm	300+360mm	300+360mm
Water Tank Capacity	L	150	150	150	150	150
Table Loading	kgs	200	350	450	800	1200
Electrode Diameter	mm	0.2-3.0(300: 1)	0.2-3.0(300: 1)	0.2-3.0(300: 1)	0.2-3.0(300: 1)	0.2-3.0(300: 1)
Machine weight	Kgs	1050	1150	1350	2050	3000
Overall size	Mm	1200*1050*1950	1350*1150*1950	1450*1250*2050	1650*1400*2050	1860*1550*2200
Working accuracy		According to GB7926-2005				
Power Supply		3P 380V, 50/60Hz				
Working fluid		Clean water or Purified Water				
Machining Aver. Current	A	30	30	30	30	30
Max.Cutting Speed	Mm/min	50-70	50-70	50-70	50-70	50-70
Max.Processing Power	W	3.3	3.3	3.6	3.6	4.5
Water Pump pressure	Mpa	10	10	10	10	10